

JUST FRIENDS GF. (C) A (E^b) D B^b B E F[#] A^b B^b
 our love is here, TO STAY
 B^b B C

Smoke 106

No 2

chord scale

129

168

minimo

(1)

WIDAK BEBOB
 WIDAK 2 → 7
 Drop 2 double m7

calderazzo splurge
 a leu cha
 wyna
 new standard
 goat steps
 phineas rainbow
 dream to blue
 solo bank

comping

RIMSHOT
 COE END OF SOLO

BLOCK
 DROP 2
 Drop 2 double melody
 Sean 2
 red.

Block
 2 chord

Sam to u
 scale

F A^b B C C[#] E^b E

D7

D7

Handwritten musical notation for D7 chords. The first system consists of two staves. The top staff has notes: C4, D4, E4, F#4, G4, A4, B4, C5. The bottom staff has notes: G3, A3, B3, C4, D4, E4, F#4, G4. The second system also consists of two staves. The top staff has notes: C4, D4, E4, F#4, G4, A4, B4, C5. The bottom staff has notes: G3, A3, B3, C4, D4, E4, F#4, G4. There are various accidentals (sharps, flats, naturals) throughout the notation.

C7

B7

Handwritten musical notation for C7 and B7 chords. The first system consists of two staves. The top staff has notes: C4, D4, E4, F#4, G4, A4, B4, C5. The bottom staff has notes: G3, A3, B3, C4, D4, E4, F#4, G4. The second system also consists of two staves. The top staff has notes: C4, D4, E4, F#4, G4, A4, B4, C5. The bottom staff has notes: G3, A3, B3, C4, D4, E4, F#4, G4. There are various accidentals (sharps, flats, naturals) throughout the notation.

A-

E7

Handwritten musical notation for A- and E7 chords. The first system consists of two staves. The top staff has notes: A3, B3, C4, D4, E4, F#4, G4, A4. The bottom staff has notes: E3, F#3, G4, A4, B4, C5, D5, E5. The second system also consists of two staves. The top staff has notes: A3, B3, C4, D4, E4, F#4, G4, A4. The bottom staff has notes: E3, F#3, G4, A4, B4, C5, D5, E5. There are various accidentals (sharps, flats, naturals) throughout the notation.

A7

A

Handwritten musical notation for A7 and A chords. The first system consists of two staves. The top staff has notes: A3, B3, C4, D4, E4, F#4, G4, A4. The bottom staff has notes: E3, F#3, G4, A4, B4, C5, D5, E5. The second system also consists of two staves. The top staff has notes: A3, B3, C4, D4, E4, F#4, G4, A4. The bottom staff has notes: E3, F#3, G4, A4, B4, C5, D5, E5. There are various accidentals (sharps, flats, naturals) throughout the notation.

A7

Handwritten musical notation for A7 chords. The first system consists of two staves. The top staff has notes: A3, B3, C4, D4, E4, F#4, G4, A4. The bottom staff has notes: E3, F#3, G4, A4, B4, C5, D5, E5. The second system also consists of two staves. The top staff has notes: A3, B3, C4, D4, E4, F#4, G4, A4. The bottom staff has notes: E3, F#3, G4, A4, B4, C5, D5, E5. There are various accidentals (sharps, flats, naturals) throughout the notation.

Handwritten musical notation for A7 chords. The first system consists of two staves. The top staff has notes: A3, B3, C4, D4, E4, F#4, G4, A4. The bottom staff has notes: E3, F#3, G4, A4, B4, C5, D5, E5. The second system also consists of two staves. The top staff has notes: A3, B3, C4, D4, E4, F#4, G4, A4. The bottom staff has notes: E3, F#3, G4, A4, B4, C5, D5, E5. There are various accidentals (sharps, flats, naturals) throughout the notation.

Chy/L

A7

Handwritten musical notation for A7 chords. The first system consists of two staves. The top staff has notes: A3, B3, C4, D4, E4, F#4, G4, A4. The bottom staff has notes: E3, F#3, G4, A4, B4, C5, D5, E5. The second system also consists of two staves. The top staff has notes: A3, B3, C4, D4, E4, F#4, G4, A4. The bottom staff has notes: E3, F#3, G4, A4, B4, C5, D5, E5. There are various accidentals (sharps, flats, naturals) throughout the notation.

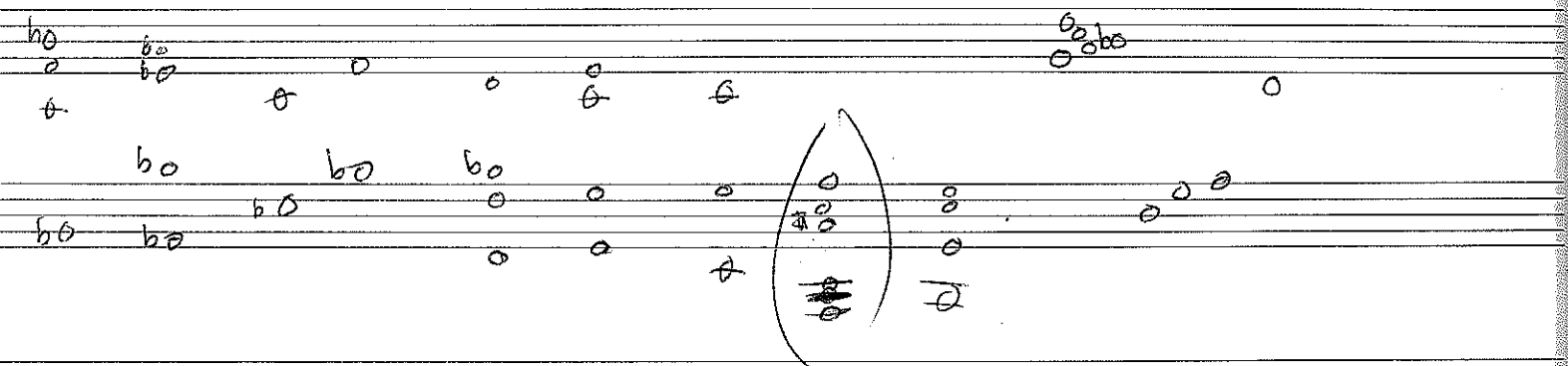
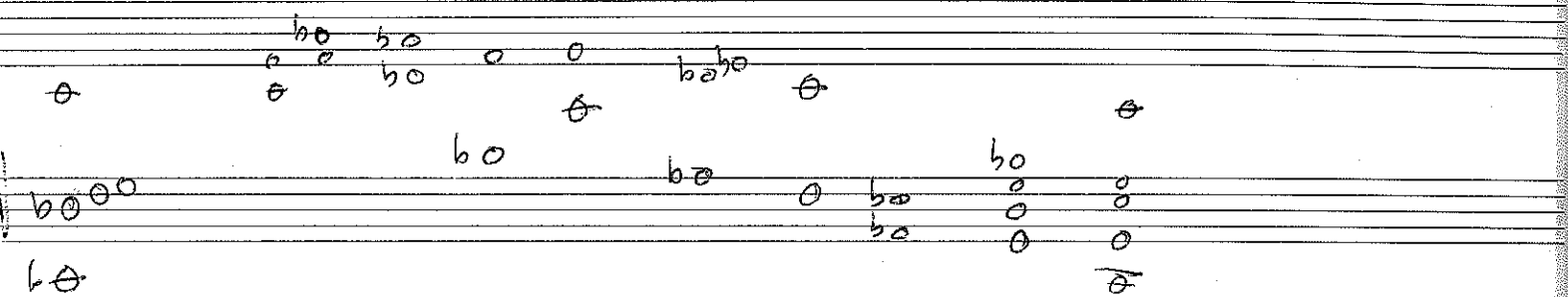
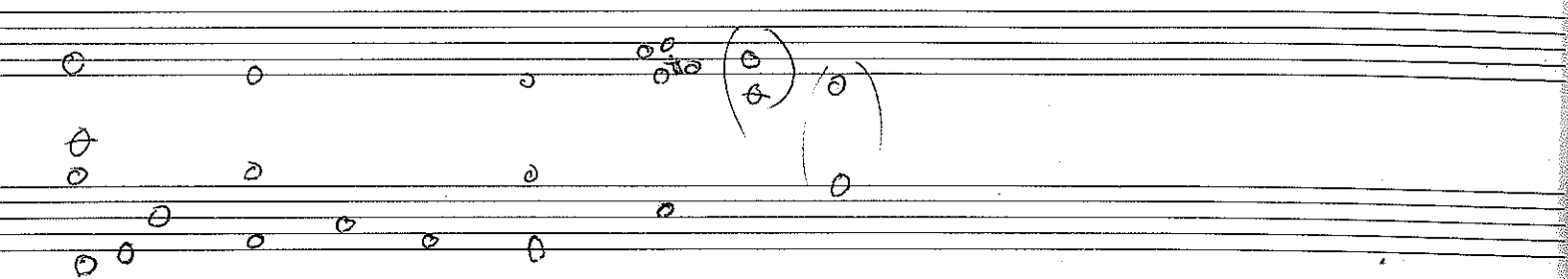
Handwritten musical notation on ten staves. The notation includes various notes, rests, and accidentals (sharps, flats, naturals). There are several annotations in the margins and between staves, including the number "9.5" at the top left, "3" above a triplet of notes, "tp" (trill) above a note, and "4" at the bottom left. The notation is dense and appears to be a personal or working manuscript.

Handwritten musical notation on three staves. The first staff contains the following chords: D/A, G/B, A/b, and F#. The second staff contains: F#, B, B/D#, A/C#, and B7sus. The third staff contains: A7 and F#.

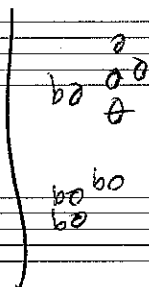
Handwritten musical notation on three staves. The first staff contains: F#. The second staff contains: D/A, G/B, and DA7. The third staff contains: F# and D.

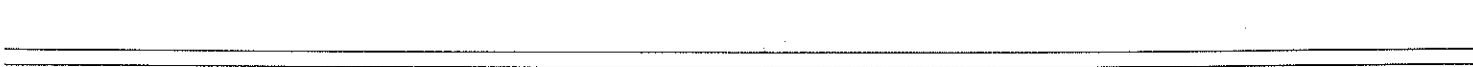
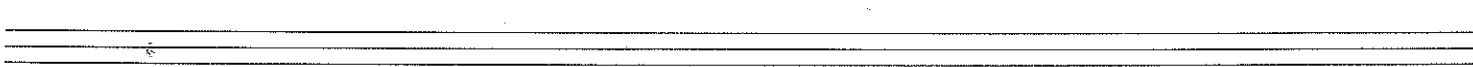
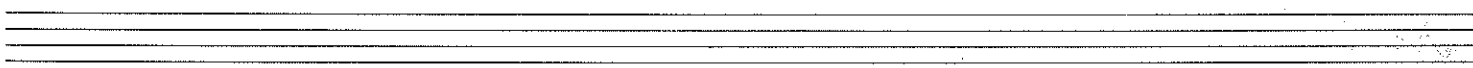
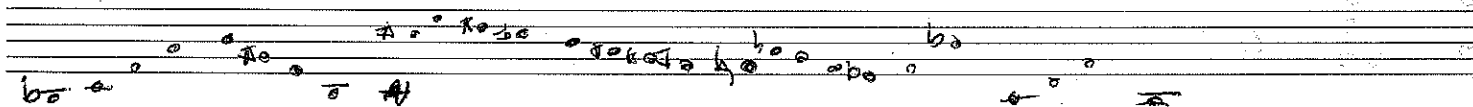
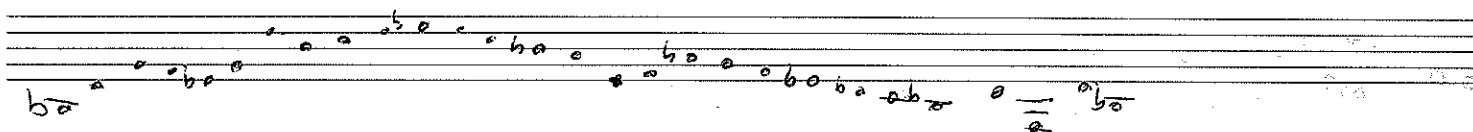
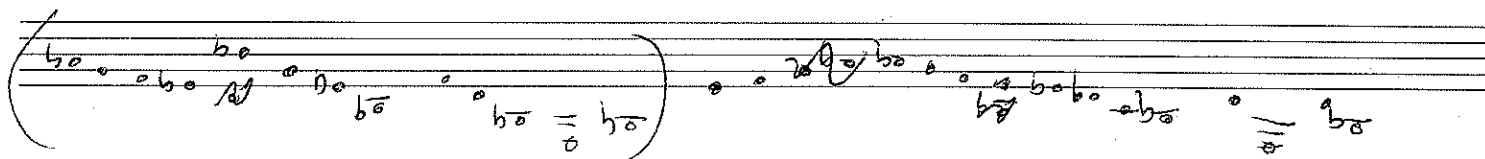
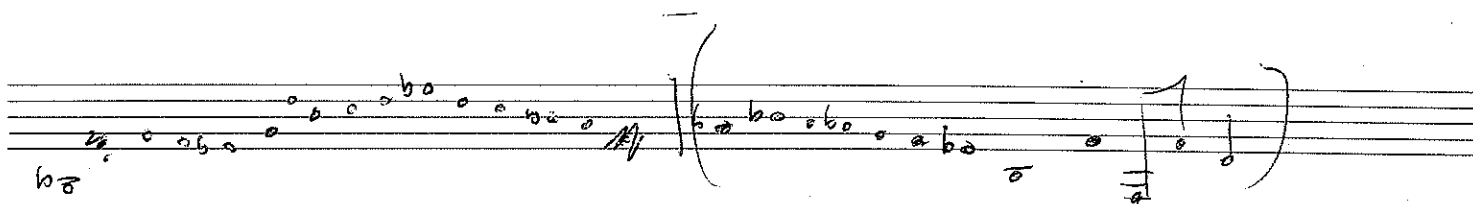
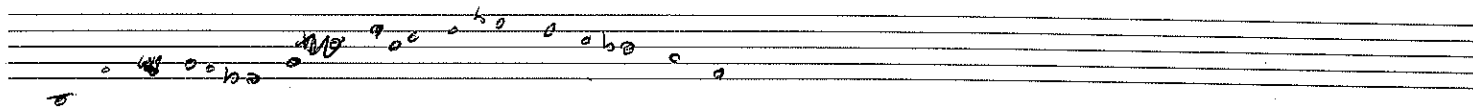
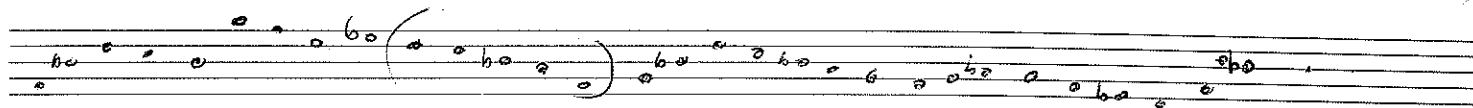
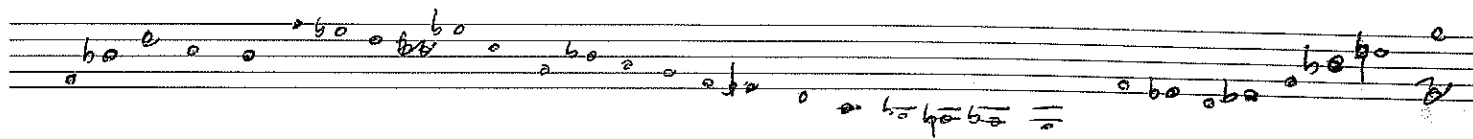
Handwritten musical notation on two staves. The first staff contains: B-, Bb, Eb, and F7. The second staff contains: F#7 and a melodic line with notes and accidentals.

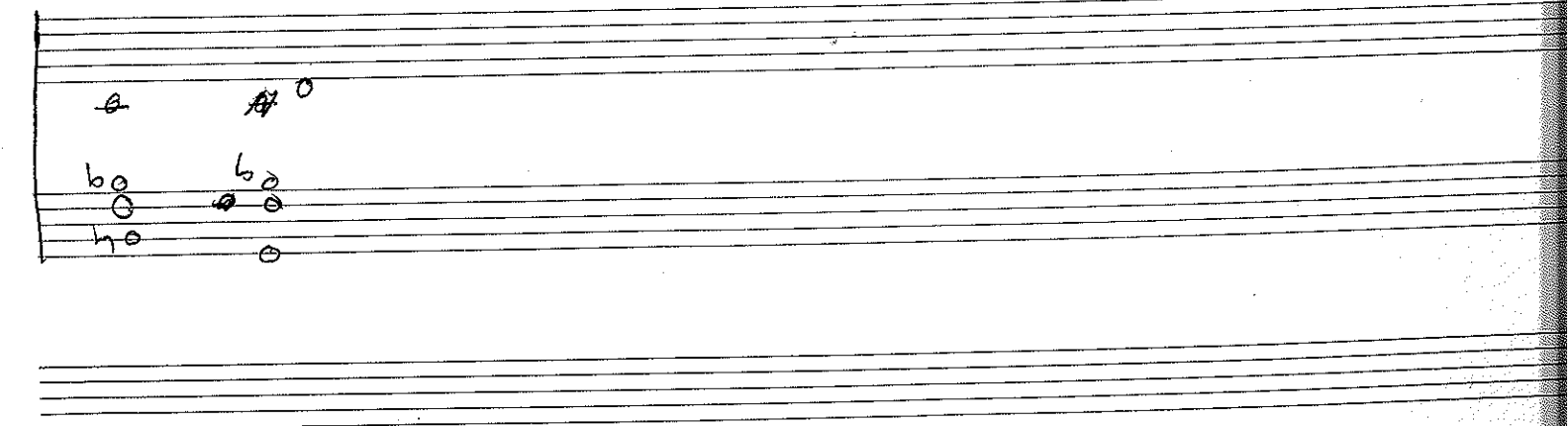
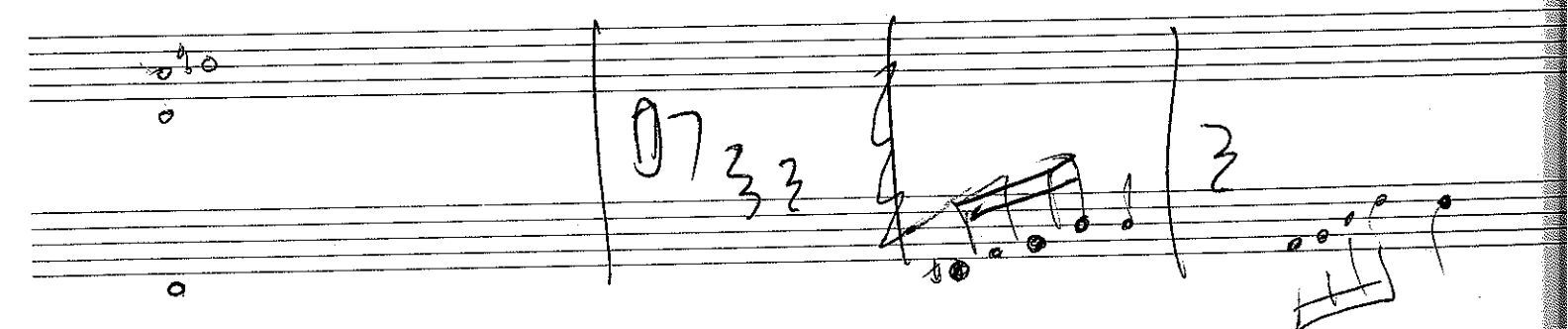
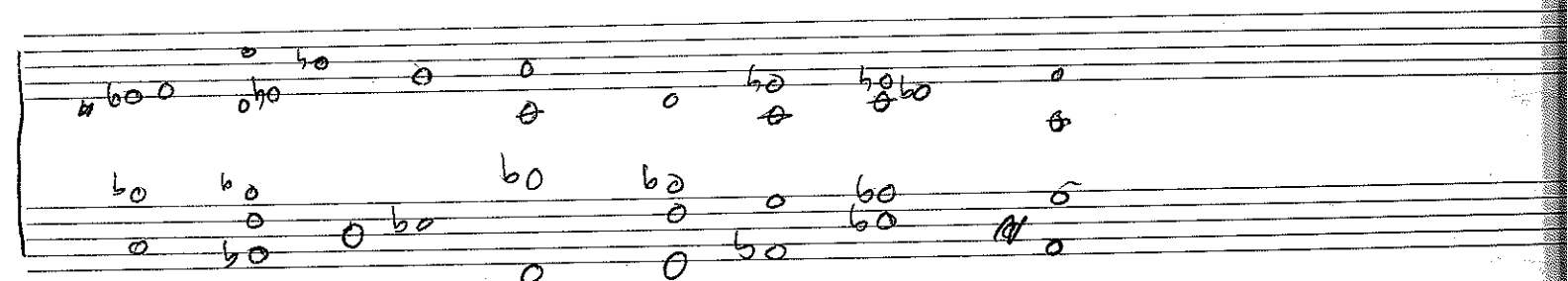
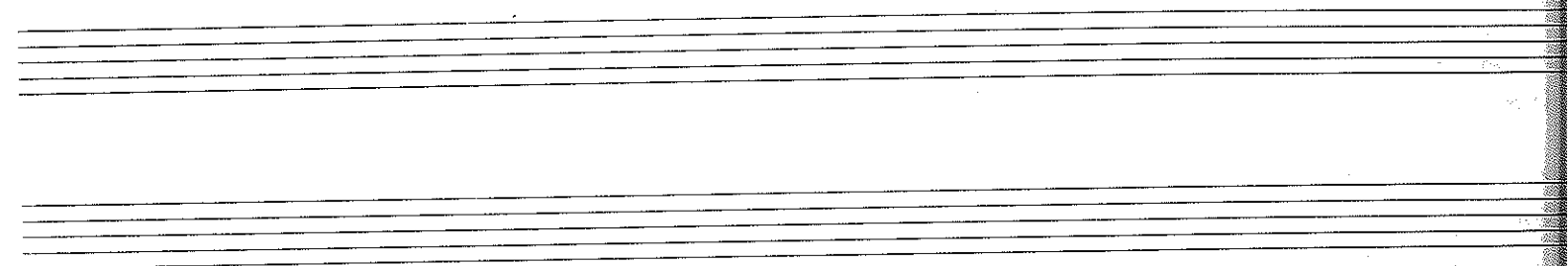
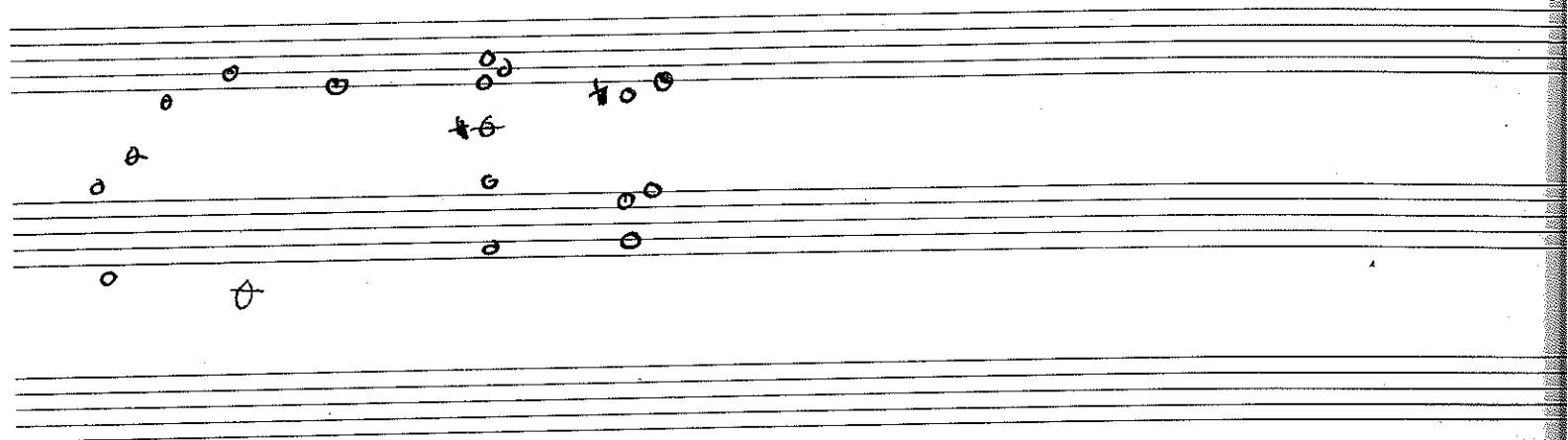
31/sept 98

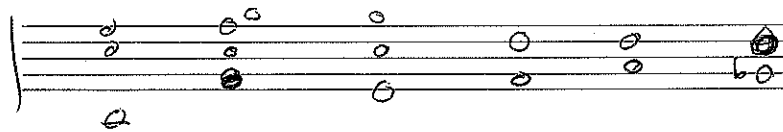
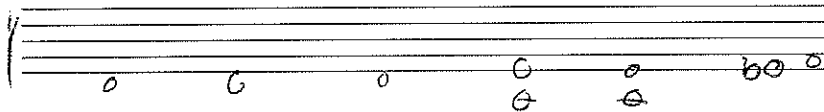
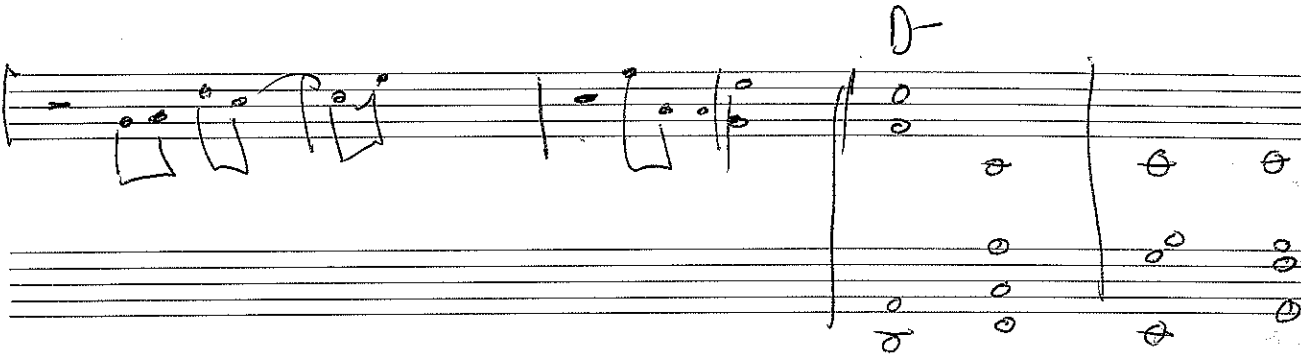
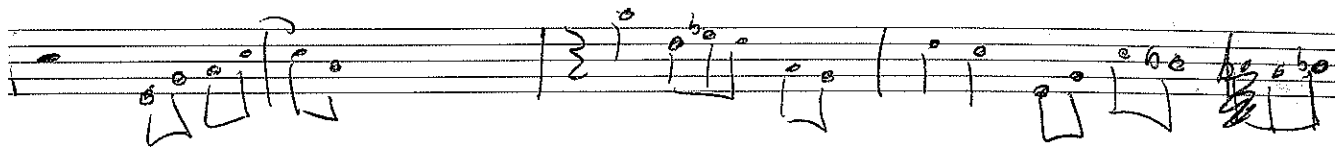


↓ SVS









Handwritten musical score on ten staves. The notation includes various musical symbols such as notes, rests, and accidentals. The first staff has a treble clef and a key signature of one flat. The second staff has a treble clef and a key signature of one flat. The third staff has a treble clef and a key signature of one flat. The fourth staff has a treble clef and a key signature of one flat. The fifth staff has a treble clef and a key signature of one flat. The sixth staff has a treble clef and a key signature of one flat. The seventh staff has a treble clef and a key signature of one flat. The eighth staff has a treble clef and a key signature of one flat. The ninth staff has a treble clef and a key signature of one flat. The tenth staff has a treble clef and a key signature of one flat.

four four 8/sep 9

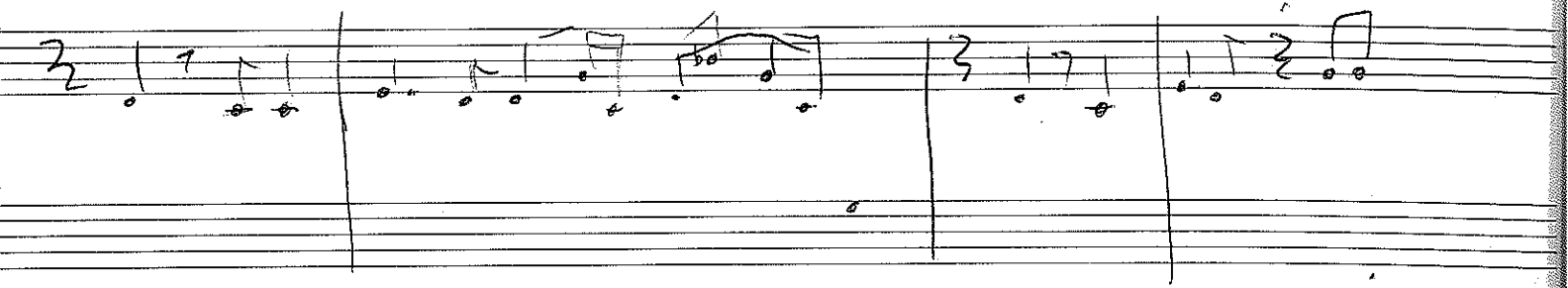
how long has this been going on

Handwritten musical notation on a four-staff system. The notation includes various notes, rests, and accidentals (sharps, flats, naturals). A vertical bar line is present between the second and third staves. Below the third staff, there are handwritten notes: F , F , F , B^b , E^b , A^b , and D .

D^b C $F7$

C F^{\sharp} E^b D

8 sept 98



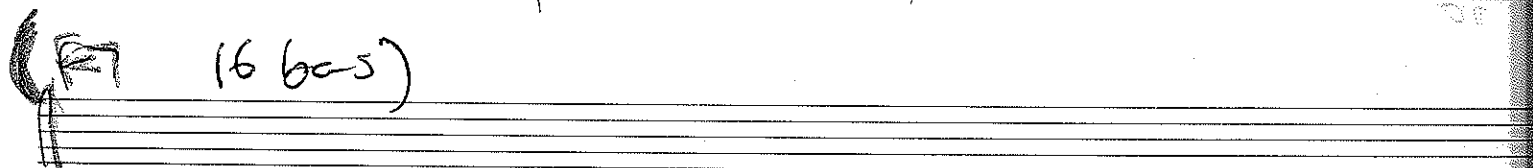
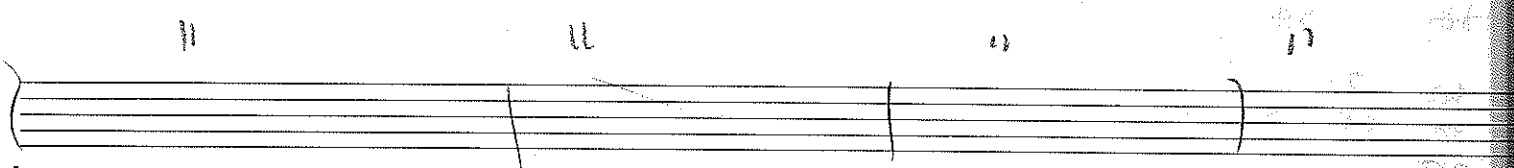
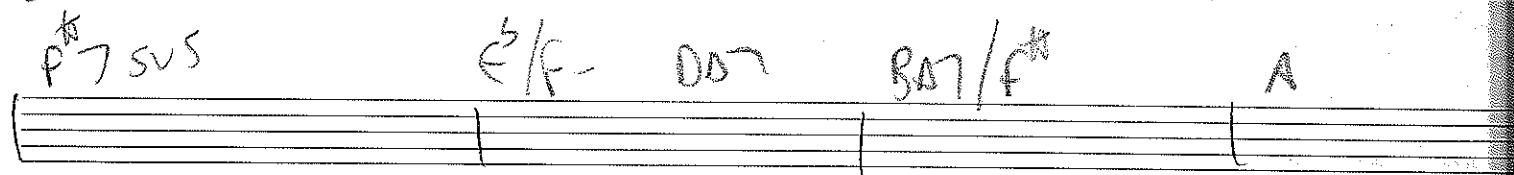
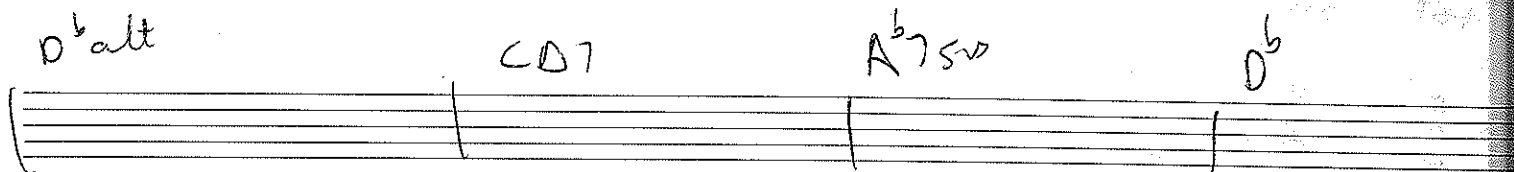
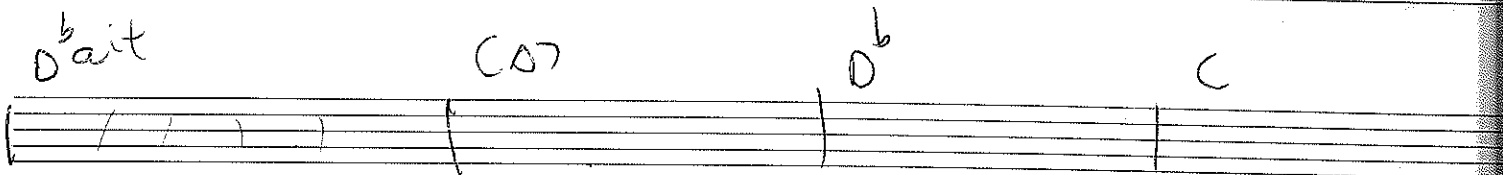
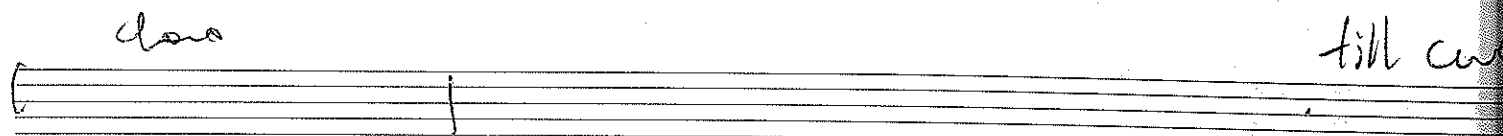
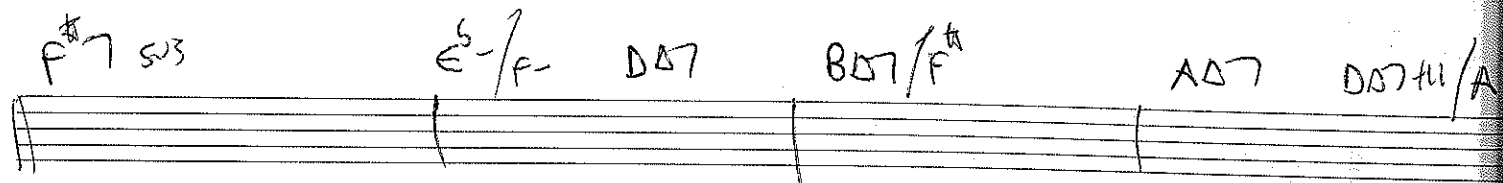
string 21



f

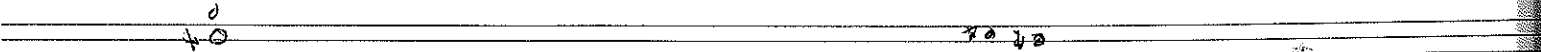
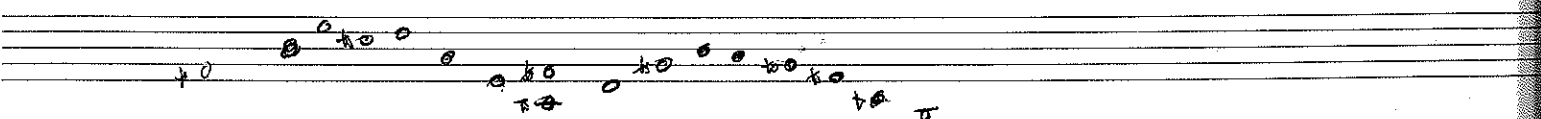
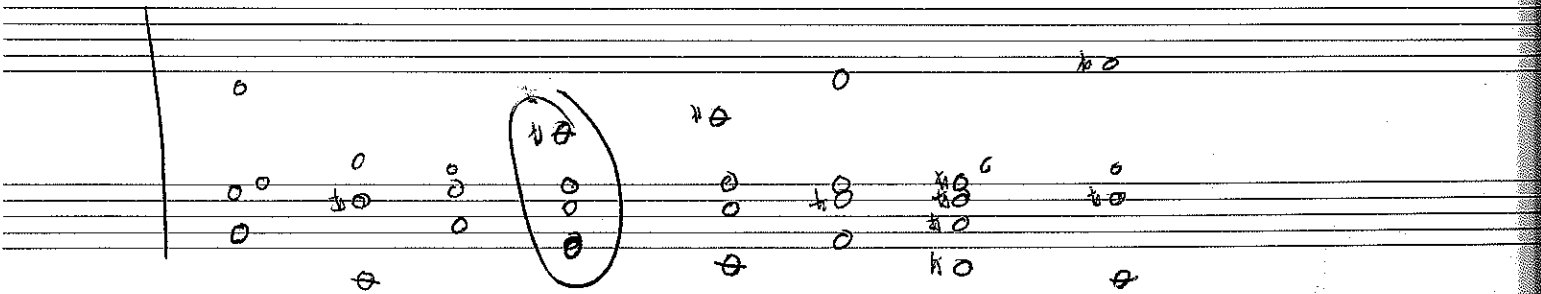
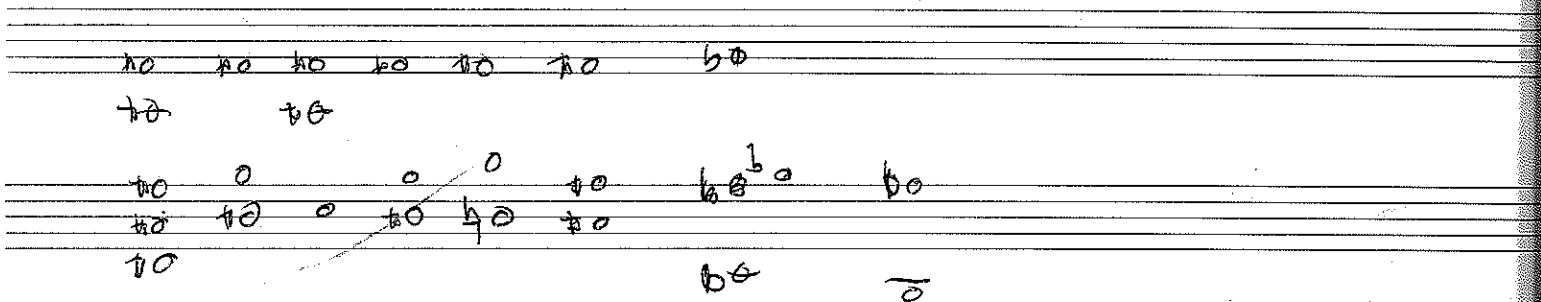
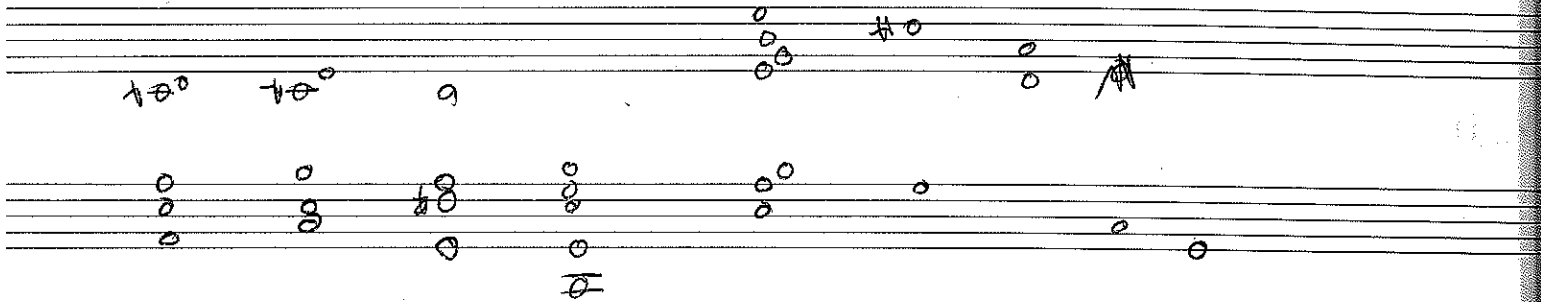


A



120-5

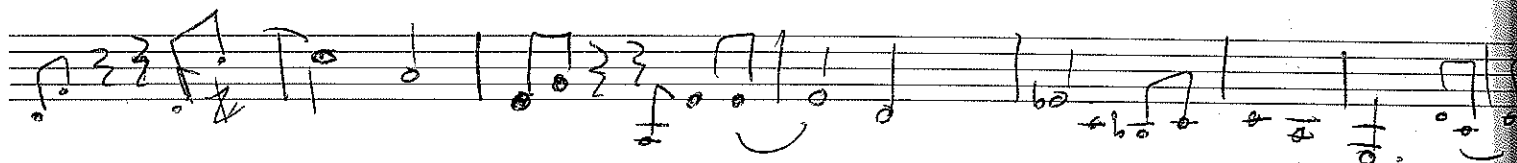
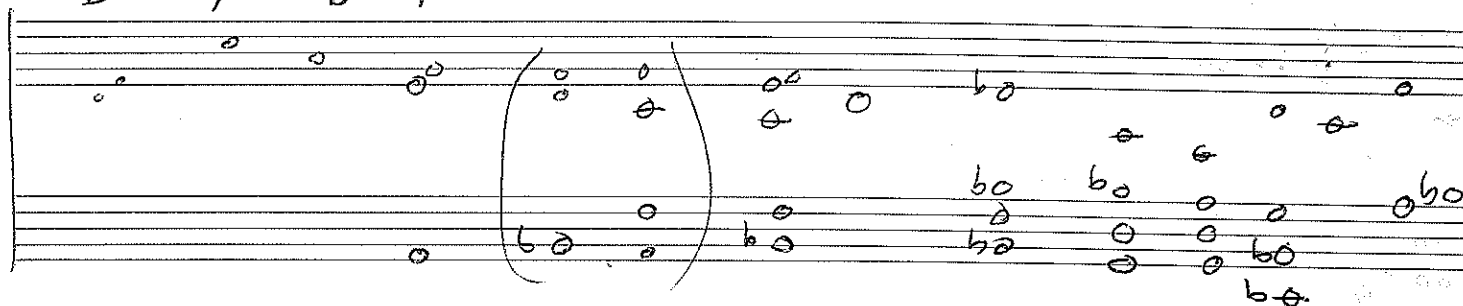
11 sept 98



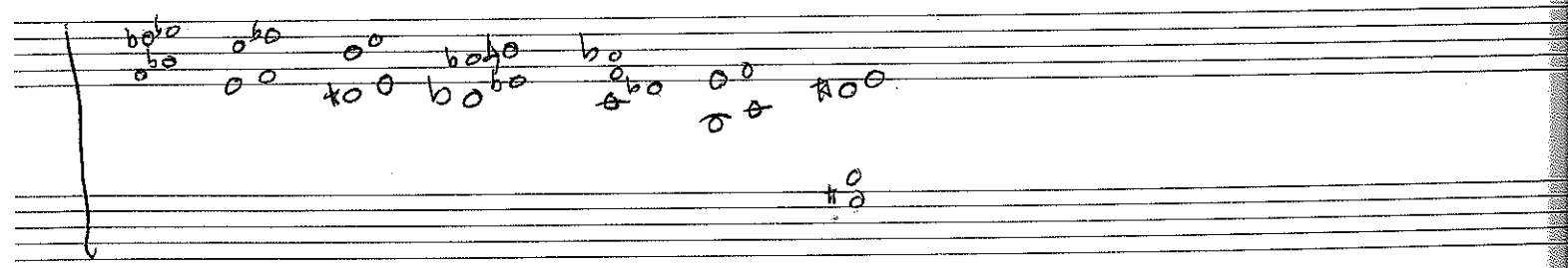
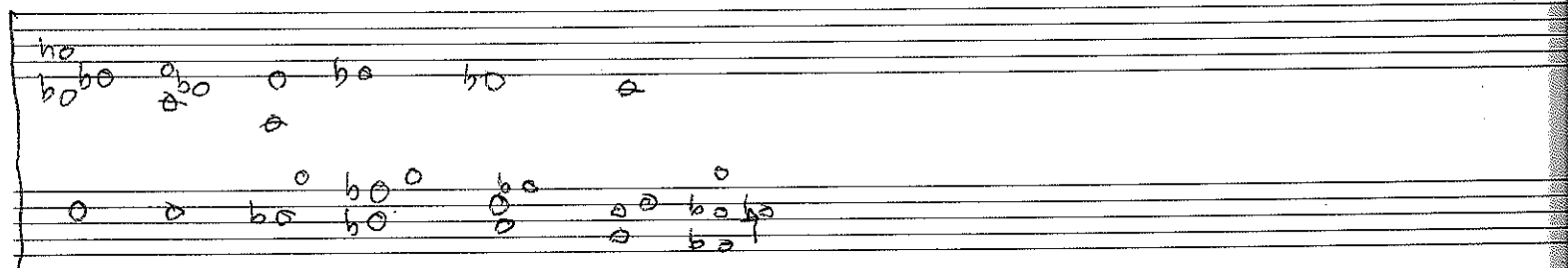
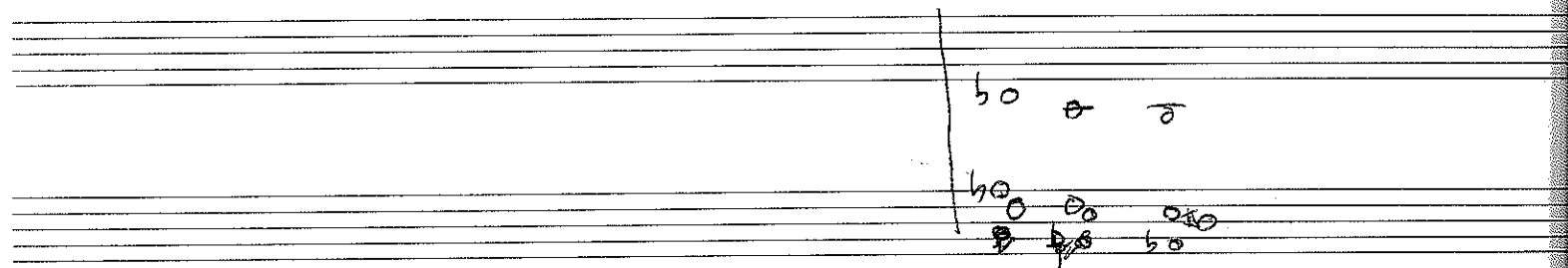
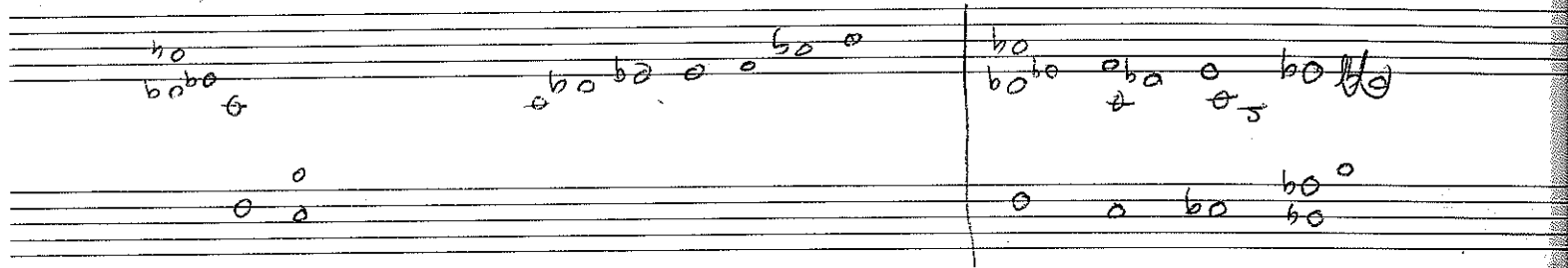
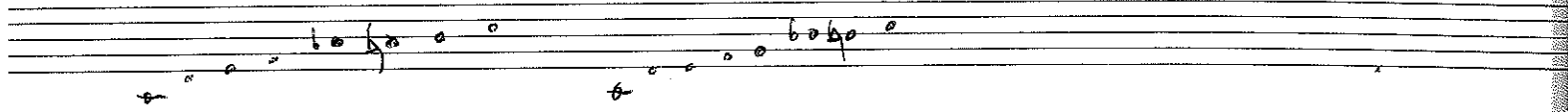
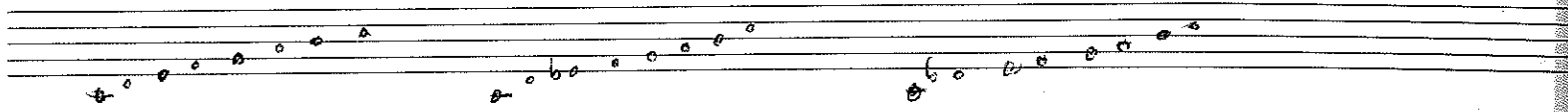
12 sep



D- A- D- A-



F



D^b add 9

C

B

81

A

A_L

9

 f^t

P

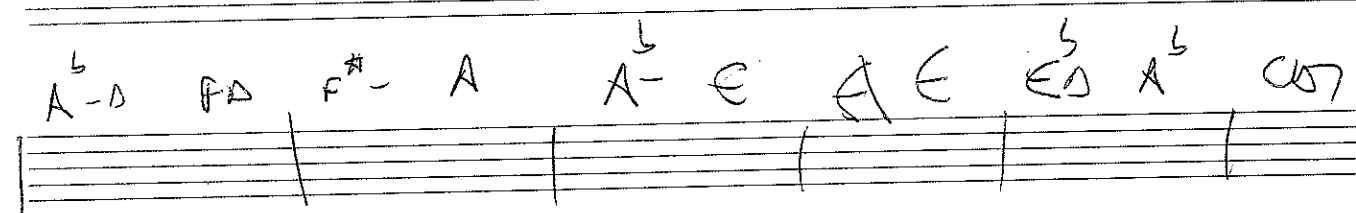
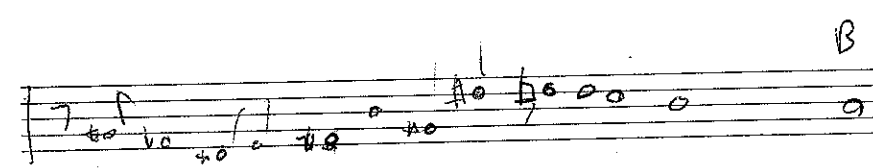
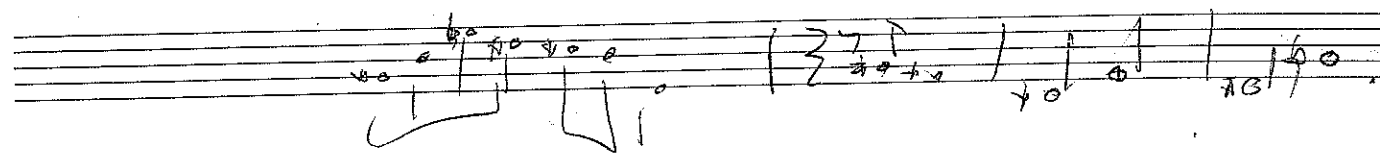
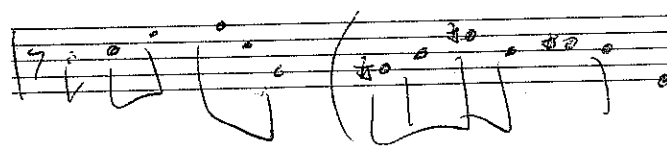
C

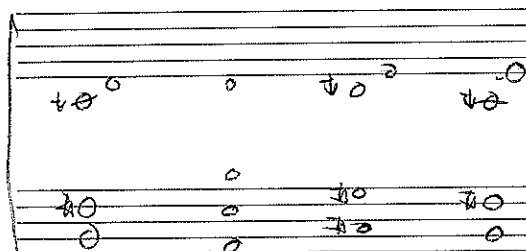
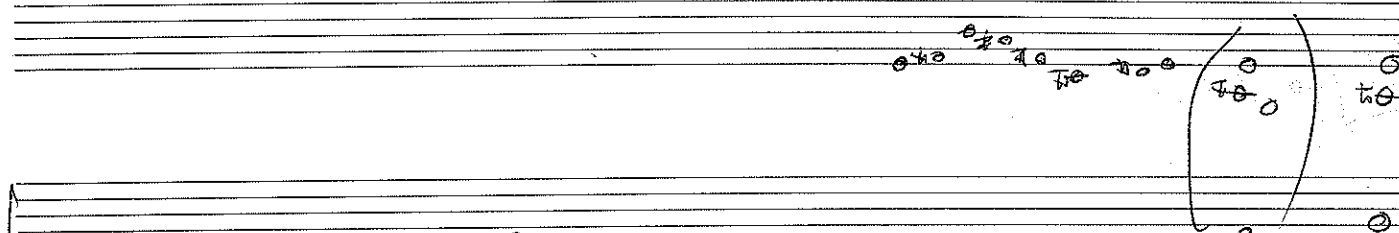
4

D

① $\frac{1}{2}$ $\frac{1}{2}$ $\frac{1}{2}$

6a





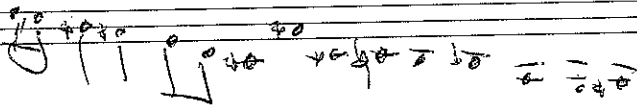
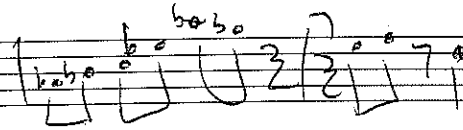
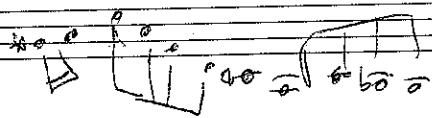
C F B C E A D G C A D E A³ D G

Webb's Shift

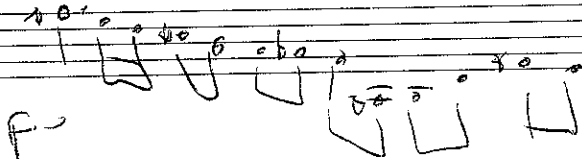
F B³ E A E D

F-

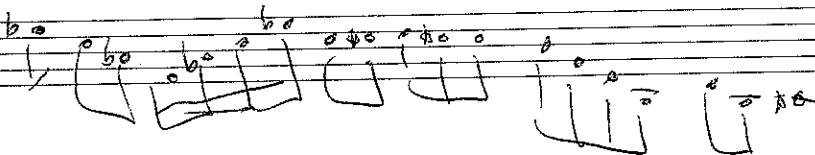
D-



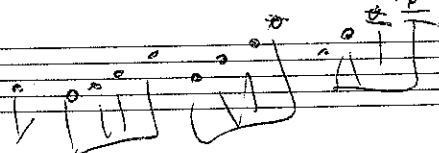
A7



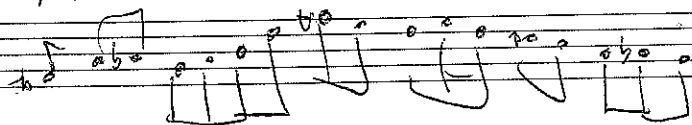
F-

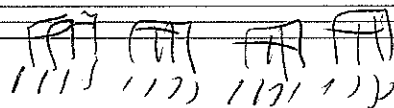
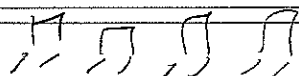
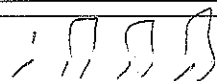
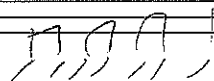
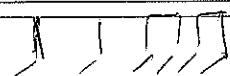
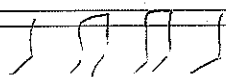
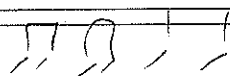
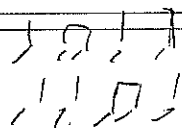
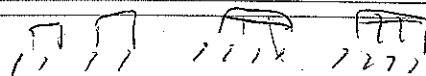
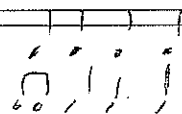
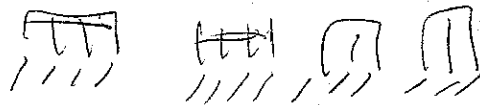


D-

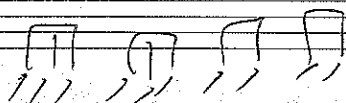
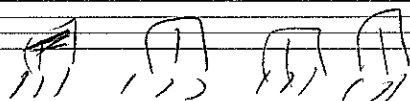


A7





3



21 Sept

The image displays five staves of handwritten musical notation. The notation is written in black ink on a white background. The first staff contains several measures of music, with notes and accidentals (sharps, flats, and naturals) written above and below the staff lines. The second staff continues the notation, with notes and accidentals. The third staff shows a continuation of the musical piece, with notes and accidentals. The fourth staff features a series of measures, some with notes and accidentals, and others with rests. The fifth staff begins with a large, stylized flourish or signature, followed by a few measures of music. The notation is somewhat informal and appears to be a personal sketch or a draft of a musical composition.

D - Δ7³ b6

A - Δ7 +4

D - b6¹

D - b6 Δ7 (b6¹ 6³)

C - C - A^b

I hate this road
I love this road
Somebody help me take this load
She won't try no what I need
So I go to the station to get me a feed
The beavers shuffle in
and they stare at me free
I smile back with a taste for free
It's a dog you share
someone should fix it real quick
but it's all you got
if you can use this bike